



# DIY Magic Mirror

Quick Setup v6

PC (Windows XP, Windows Vista, Windows 7)

# Quick Setup Instructions

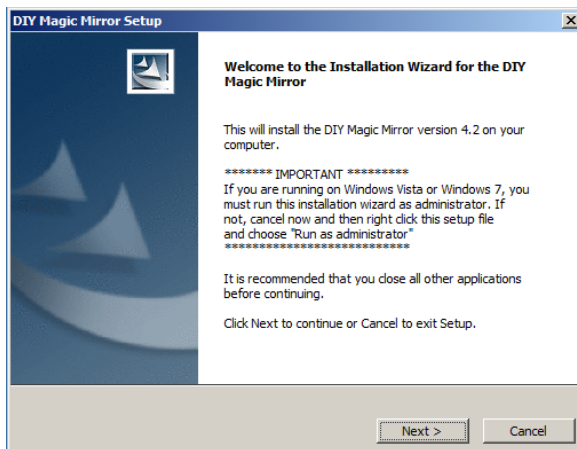
The Magic Mirror Quick Setup is for Non-Techies to get up and running quickly. To use the quick setup, you'll need to have purchased an assembled Magic Mirror Sensor Hub.



Figure 1 – Assembled Magic Mirror Sensor Hub with Case (Yellow Push Button and Cable Not Included)

**Step 1** Download the Magic Mirror Software from <http://diymagicmirror.com/install-pc.html>.

**Step 2** Launch the setup program to install the software.

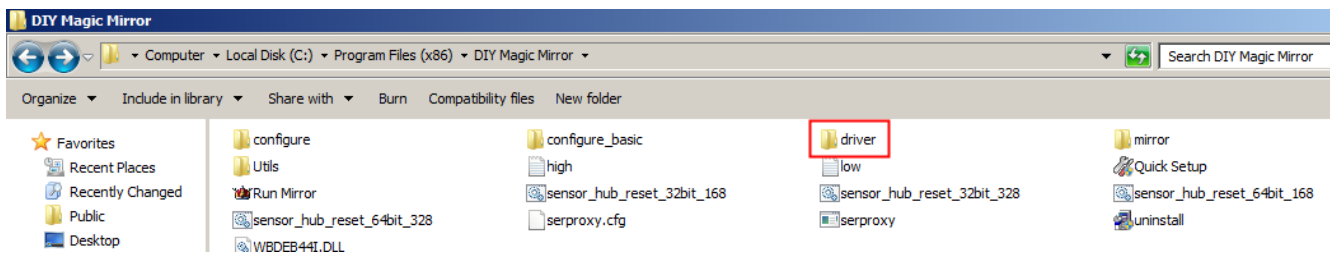


**Step 3** Insert the USB cable into the Magic Mirror Sensor Hub and plug the other end into your PC.

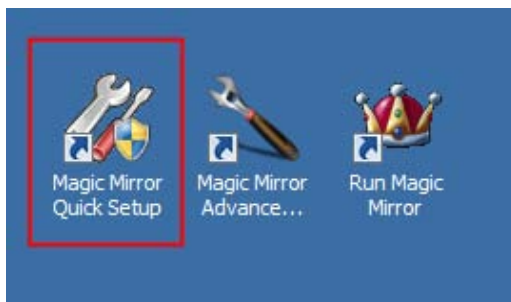


Figure 2 – USB Connection to PC

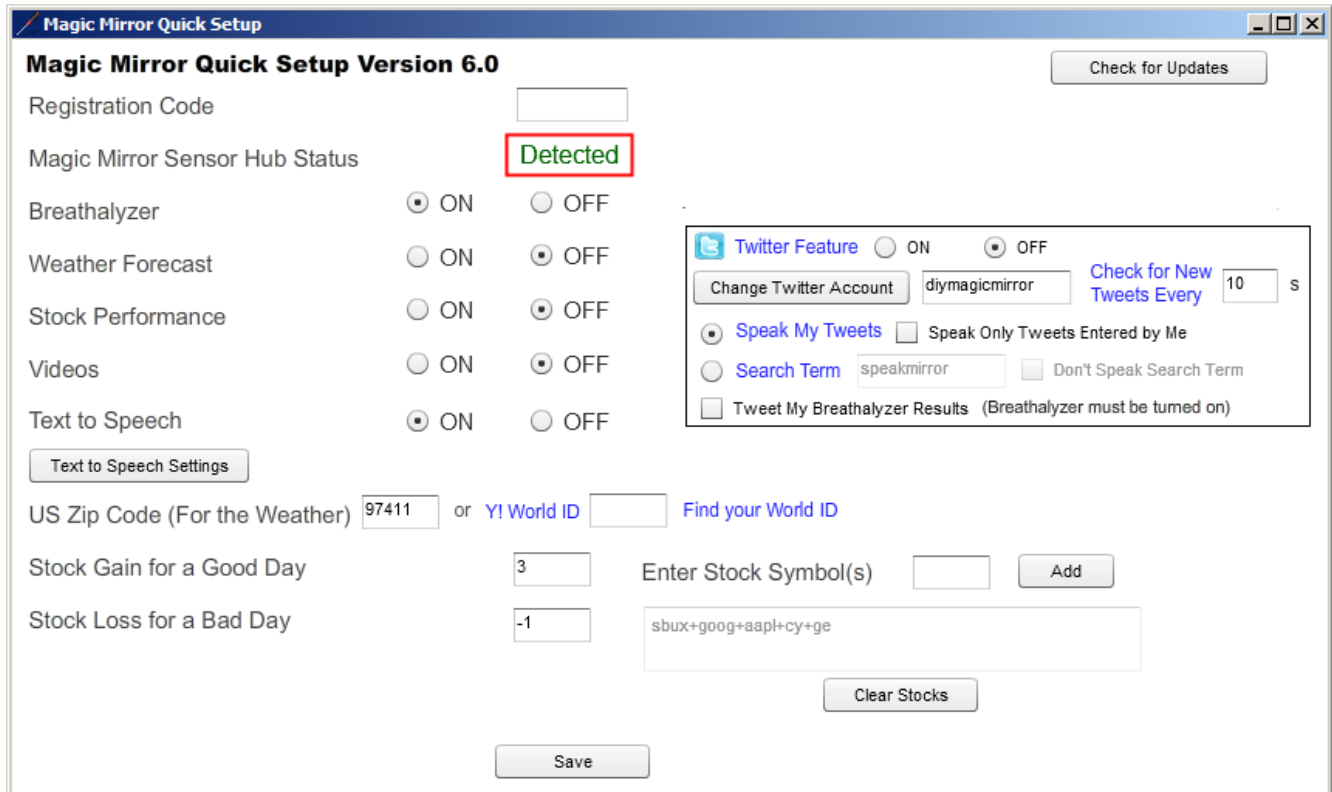
**Step 4** If you are prompted for a driver (Windows XP users will be prompted for a driver), install the driver from `c:\Program Files\DIY Magic Mirror\drivers` or `c:\Program Files (x86)\DIY Magic Mirror\drivers` if your OS is 64-bit.



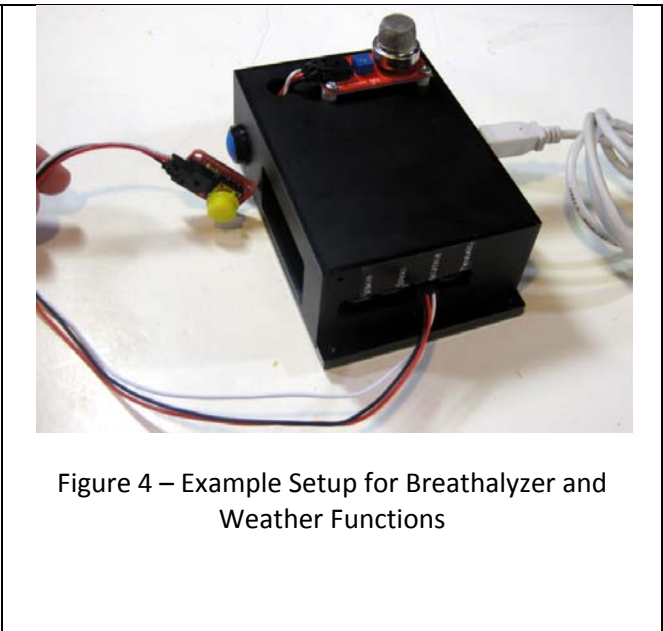
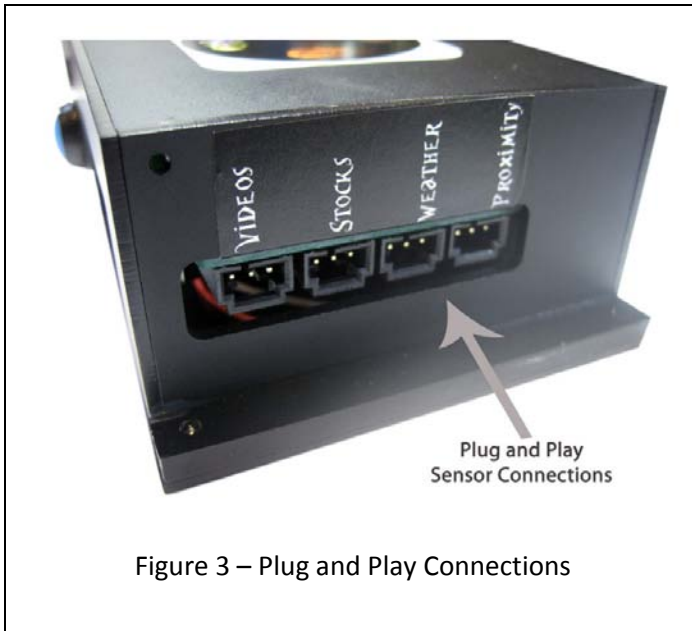
**Step 5** From your desktop, launch the “Magic Mirror Quick Setup” program. If prompted, instruct your firewall to always allow `serproxy.exe`.



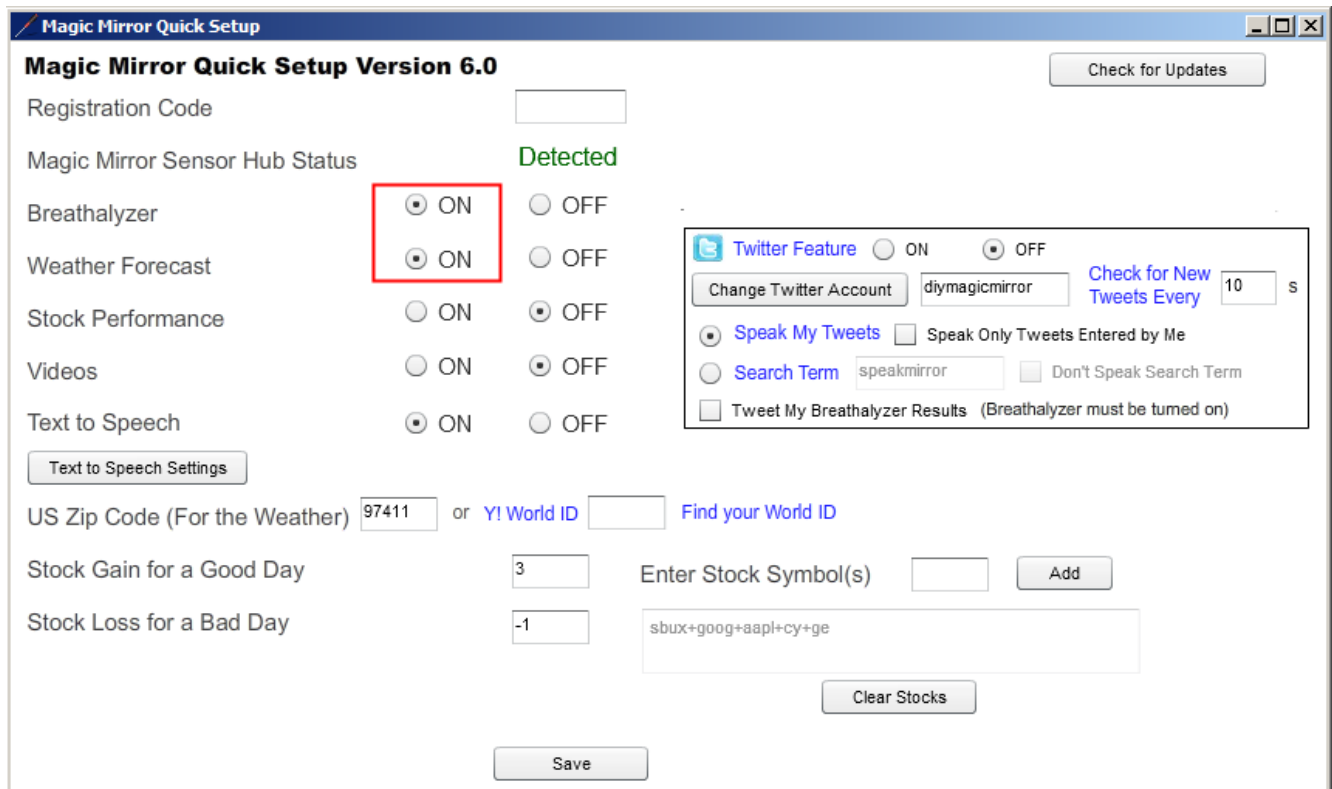
**Step 6** Look for “**Detected**” to ensure the software has found the Magic Mirror Sensor Hub. The auto-detection does not work on some computers. If you get “**Not Detected**”, exit the program and try again. If still not detected, then go to the “**Manually Detecting the Sensor Hub**” section at the end of this manual to manually find the Sensor Hub.



**Step 7** Connect the desired buttons and sensors to the plug and play connections in figure 3.

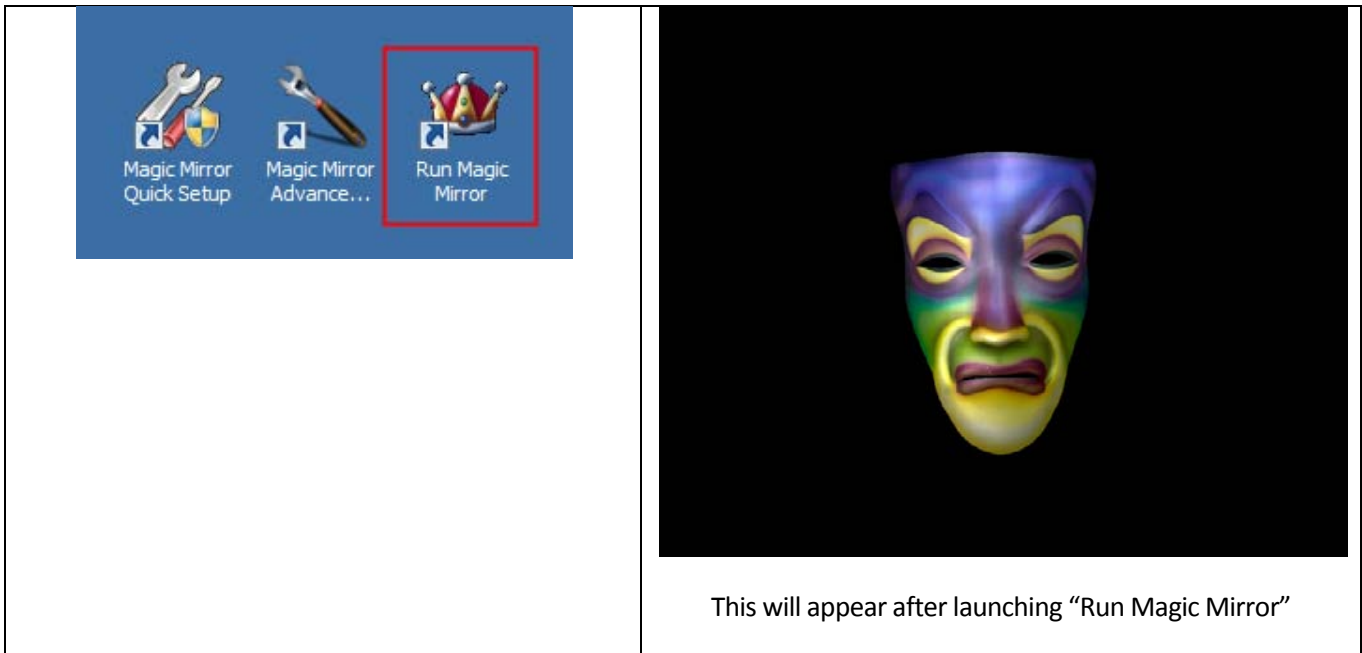


From the Magic Mirror Quick Setup Program, turn on the buttons and sensors you have connected. In the example setup in Figure 4, the Breathalyzer and Weather sensors are connected so your screen would look like this:



Enter your zip code for the weather forecast (or your Yahoo World ID if you are outside of the United States) and your stock information if using the stock feature. Also enter your Registration Code.

**Step 8** From your desktop, launch “Run Magic Mirror.” Important: Make sure you’ve connected the sensors and buttons **before** launching “Run Magic Mirror.”



**Step 9** Push the button to start the Breathalyzer. You'll be prompted to blow into the alcohol sensor. The alcohol sensor is hot so just blow on the alcohol sensor without touching it with your mouth. At the end of the countdown, the Magic Mirror will speak one of the responses in figure 5. **The responses in figure 5 will be proportional to your alcohol intake but note that the Magic Mirror Breathalyzer is *not* a professional Breathalyzer (it does not provide a blood alcohol content number) and should be used for novelty purposes only.** You may also calibrate the thresholds of the responses using the Advanced Magic Mirror Configuration program.

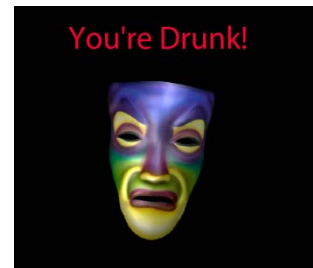
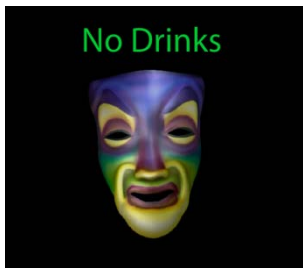
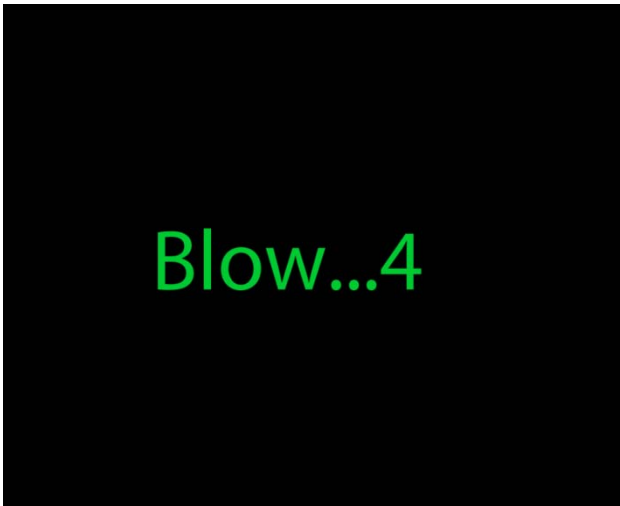
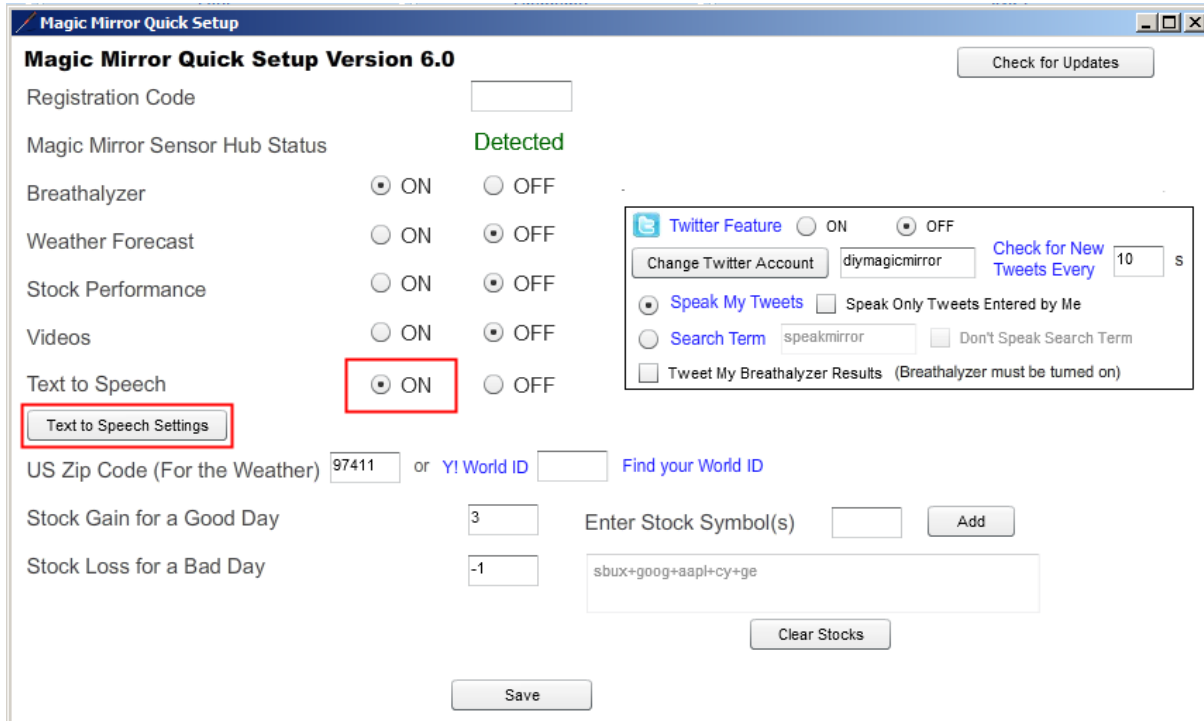
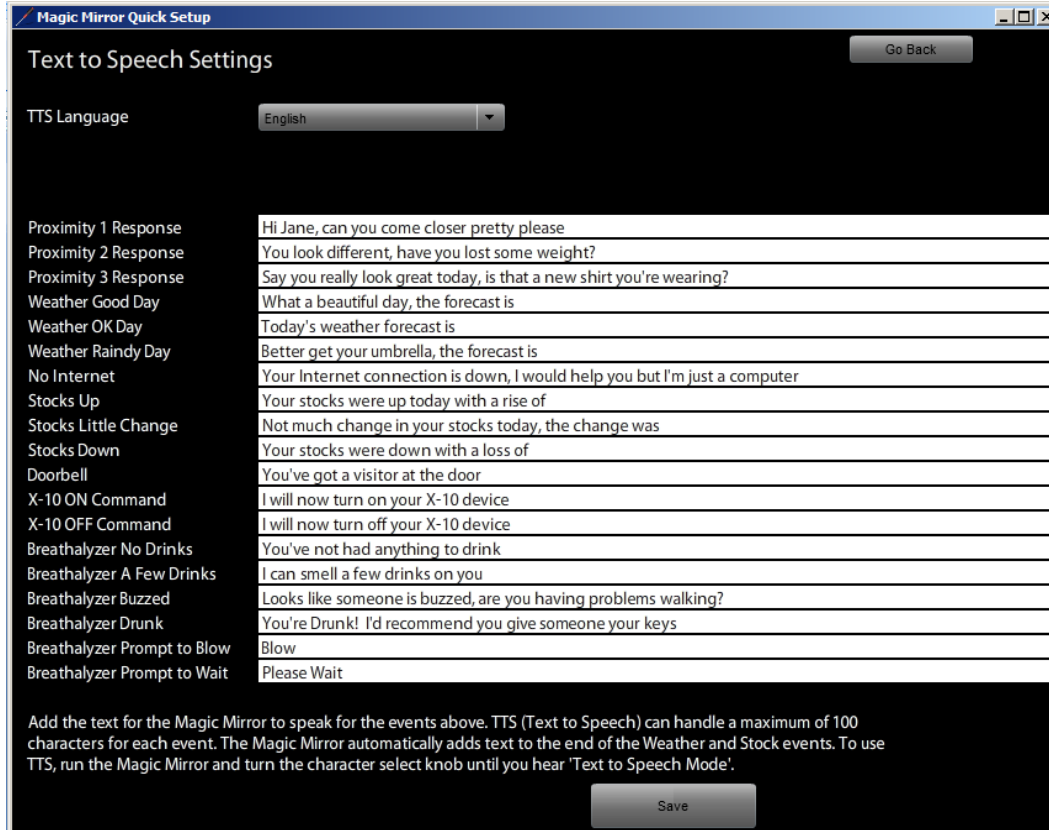


Figure 5 – Breathalyzer Responses

**Step 10a** The Magic Mirror features a Text to Speech mode that allows you to define your own responses to the sensor events. Click < ON > to enable the Text to Speech feature and then click the < **Text to Speech Settings** > button.



**Step 10b** Enter your desired responses for each sensor event and click < Save >. Refer to Step 11 for how to enter the Text to Speech mode.



**Step 11** Turning the knob will change the characters in figure 6. When turning the knob, listen for the Magic Mirror to announce “Custom Audio Mode” to enter this mode.



Figure 6 - Magic Mirror Characters

**Step 12a** Click < ON > to turn on the Twitter feature. Using the default settings, the Magic Mirror will speak (using Text to Speech) any Tweet containing “speakmirror” while checking Twitter every 10 seconds. For example, the Tweet “speakmirror hello from the Magic Mirror” will result in the Magic Mirror speaking “hello from the Magic Mirror”. You may also change the search term to any keyword you like. The Magic Mirror automatically filters out any word containing http:// so URLs are not spoken. Uncheck < Don’t Speak Search Term > to have the Magic Mirror also speak the search term.

**Magic Mirror Quick Setup Version 6.0** Check for Updates

Registration Code

Magic Mirror Sensor Hub Status **Detected**

Breathalyzer  ON  OFF

Weather Forecast  ON  OFF

Stock Performance  ON  OFF

Videos  ON  OFF

Text to Speech  ON  OFF

US Zip Code (For the Weather)  or **Y! World ID**  [Find your World ID](#)

Stock Gain for a Good Day  Enter Stock Symbol(s)

Stock Loss for a Bad Day

**Twitter Feature**  ON  OFF

s

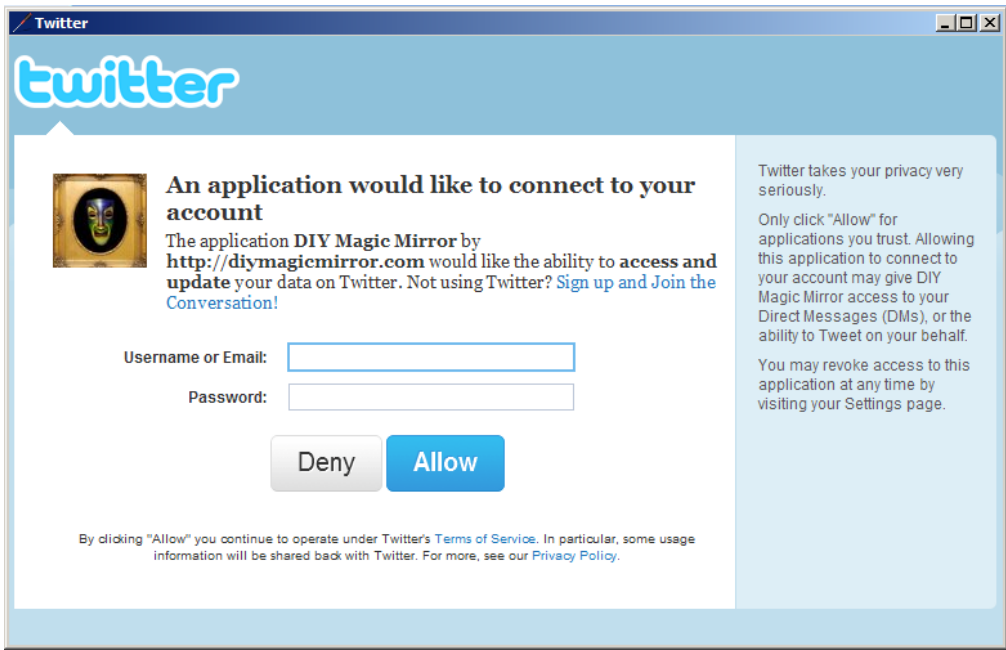
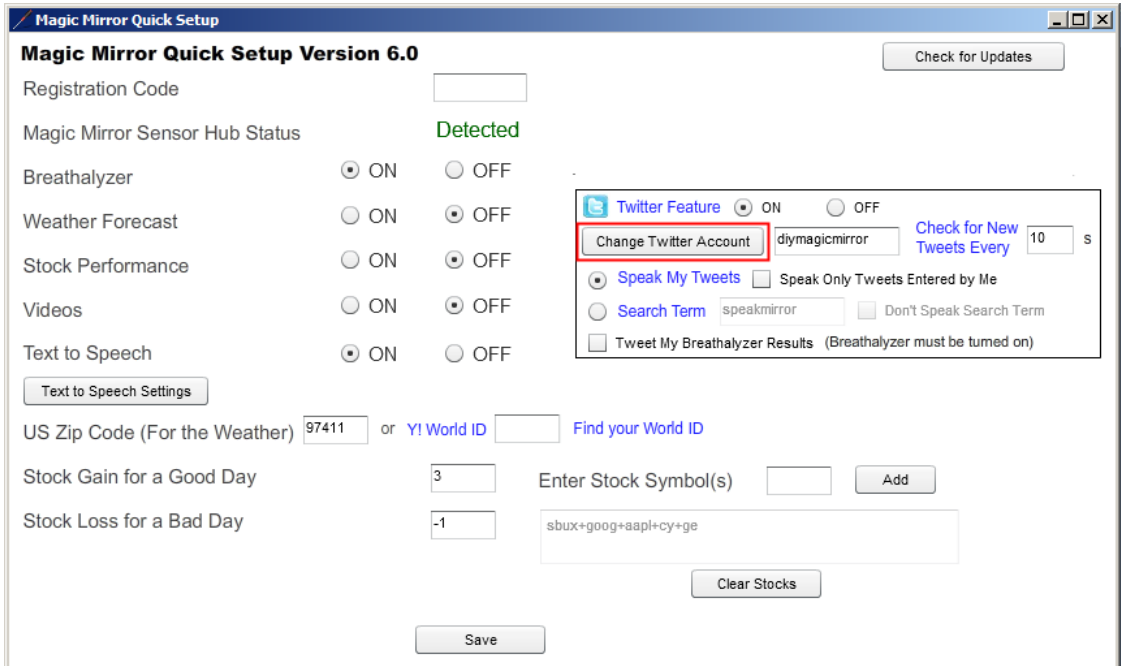
**Speak My Tweets**  Speak Only Tweets Entered by Me

**Search Term**   Don't Speak Search Term

Tweet My Breathalyzer Results (Breathalyzer must be turned on)

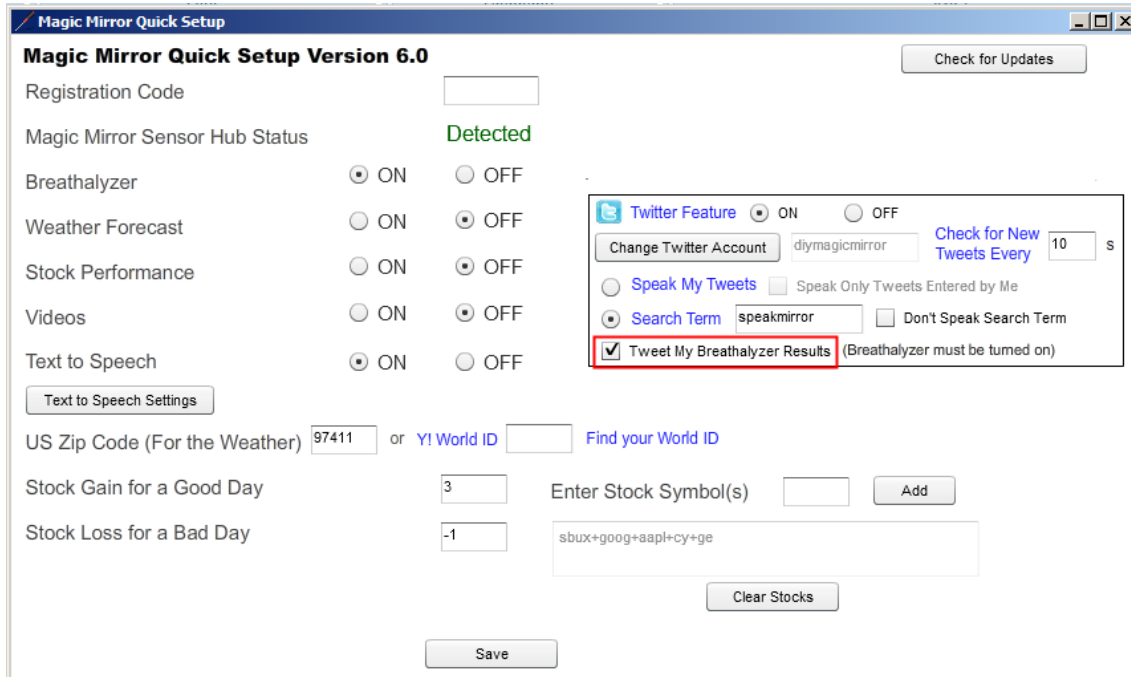
**Step 12b** Alternatively, you may link your Twitter account to the Magic Mirror. The Magic Mirror will then speak Tweets from your Twitter account. Upon starting up, the Magic Mirror will speak your most recent Tweet and then per the < Check for New Tweets Every > setting (default is 10 seconds), speak any new Tweet. Checking < Announce Only My Tweets > will limits responses to just Tweets authored by you.

Check **“Tweet My Breathalyzer Results”** to have the Magic Mirror automatically Tweet your Breathalyzer results.



After clicking “Link Twitter Account”, enter your Twitter username and password from this box. You only have to do this once.

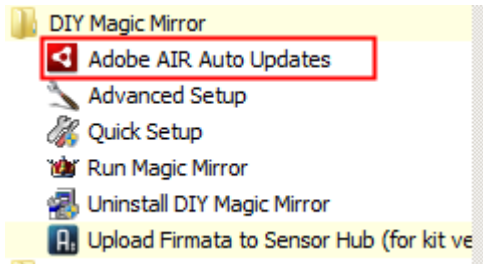
Check "Tweet My Breathalyzer Results" (default is Off) and the Magic Mirror will automatically Tweet your Breathalyzer results.



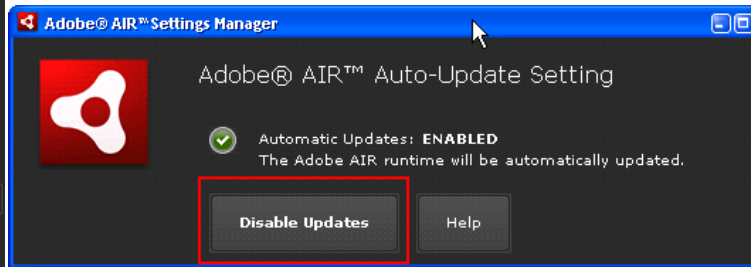
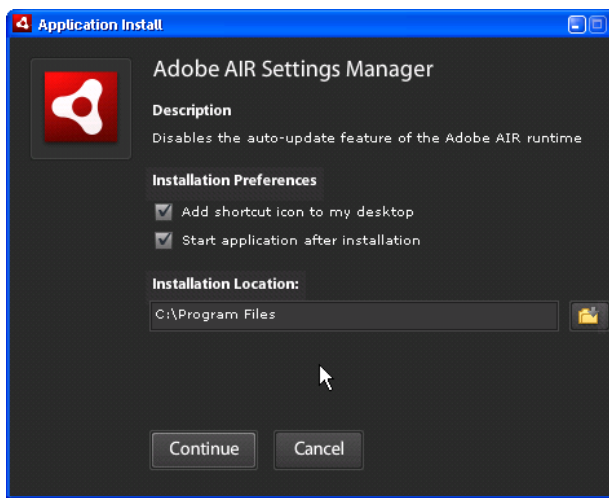
## Breathalyzer Tweets





**Step 13** Optional - Adobe AIR will periodically prompt for automatic updates. To disable Adobe AIR automatic updates, run “Adobe AIR Auto Updates” and then select “Disable Updates”.



If you do not do this, you'll get an Adobe AIR upgrade prompt every so often which will be a problem if you are running in a kiosk mode (no keyboard/mouse).



In addition to the buttons, touch sensors may also be used as well as a proximity sensor (the proximity sensor does involve some soldering). See <http://diymagicmirror.com/sensors.html> for places to purchase the sensors.

Sensor	Magic Mirror Function(s)	Sensor Picture
Proximity Sensor (1) – Maxbotix LV-EV1, a sonar based sensor that measures the distance of objects up to 22 feet	Plays various animations based on the distance the subject is from the sensor	
Touch Sensors (Up to 3) – From left to right: Seedstudio Touch Sensor, Phidgets 1110, and Phidgets 1129	Weather Forecast, Stock Performance, and Videos	

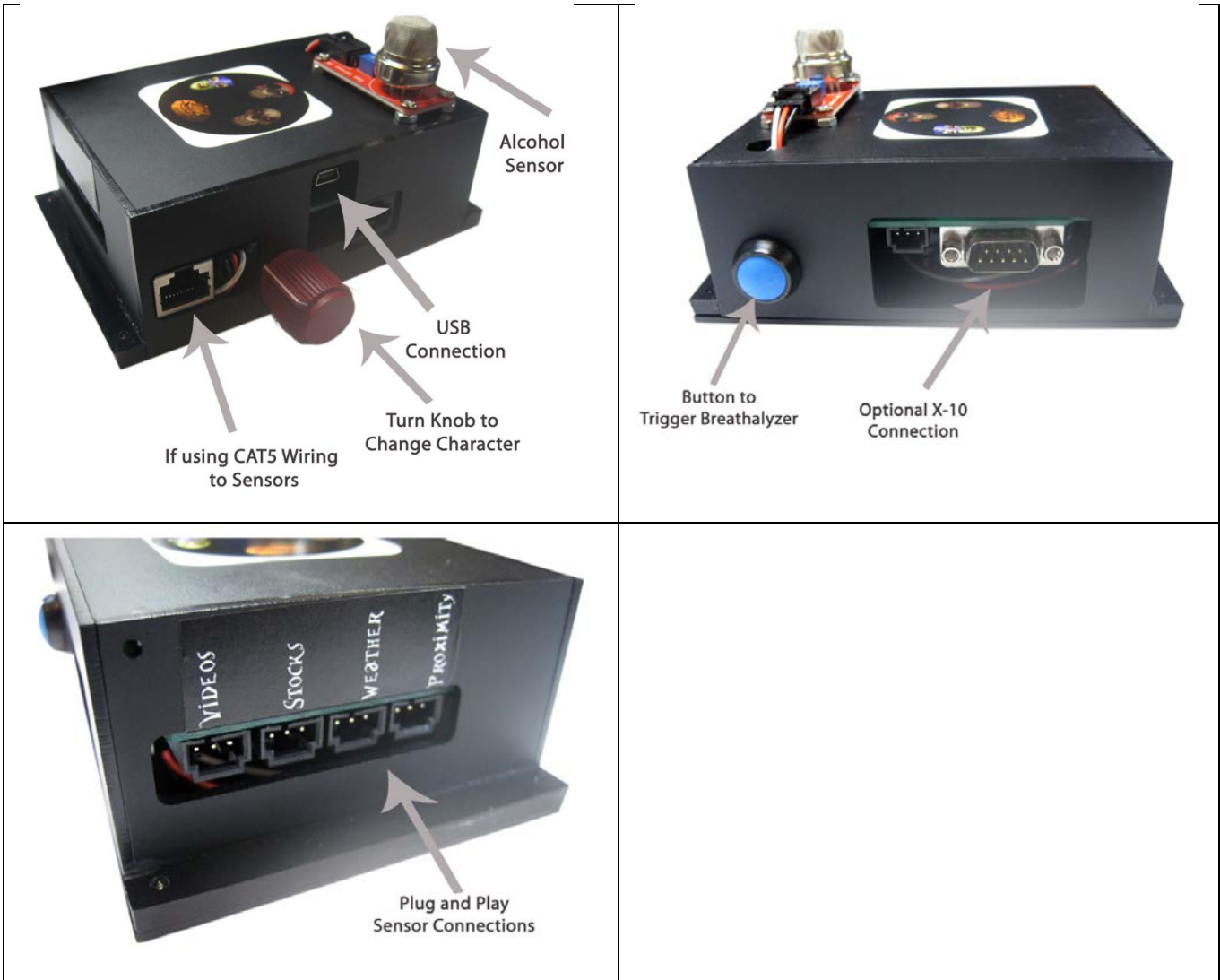
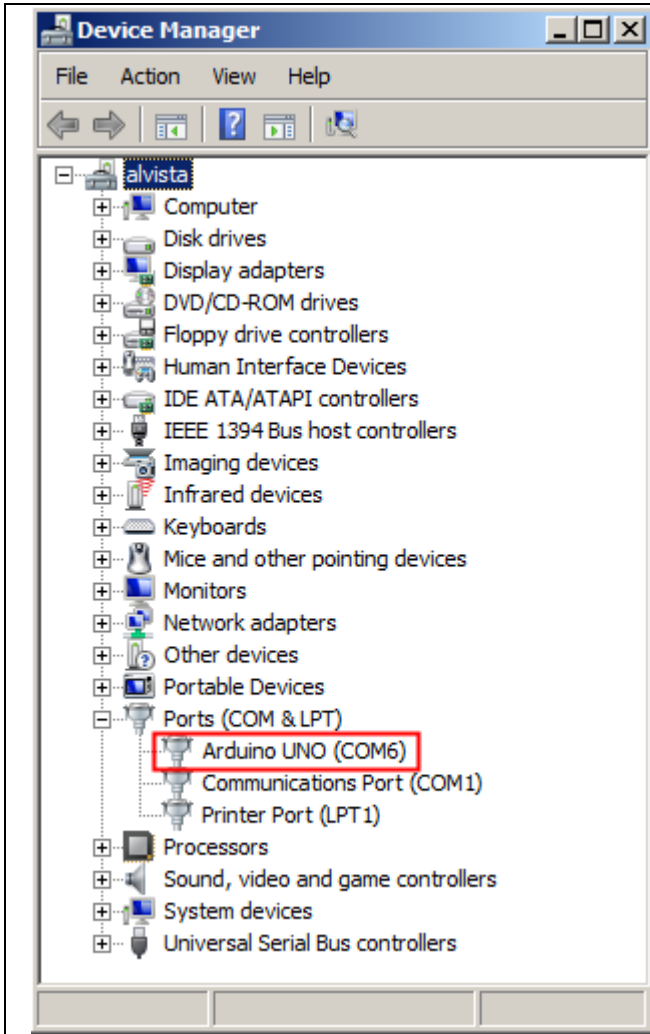


Figure 6 – Magic Mirror Sensor Hub Connections

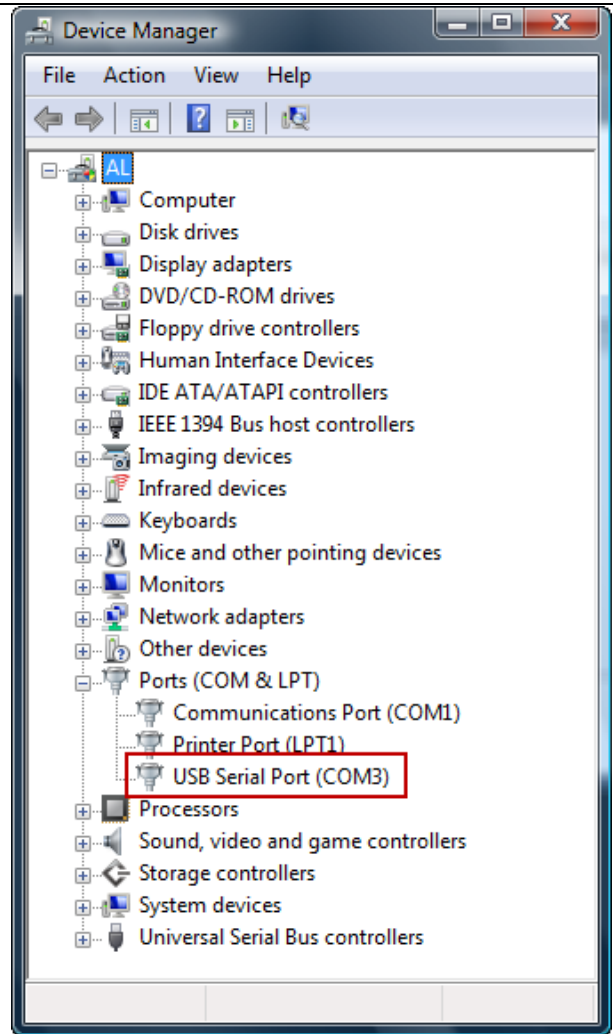
## Manually Detecting the Sensor Hub

Exit the “Magic Mirror Quick Setup” program.

Run Device Manager from the Windows Control Panel or as a shortcut, type “devmgmt.msc” from the Windows run command. Make a note of the COM Port number next to “Arduino UNO” or “USB Serial Port”.



Breathalyzer with Case Version of the Kit



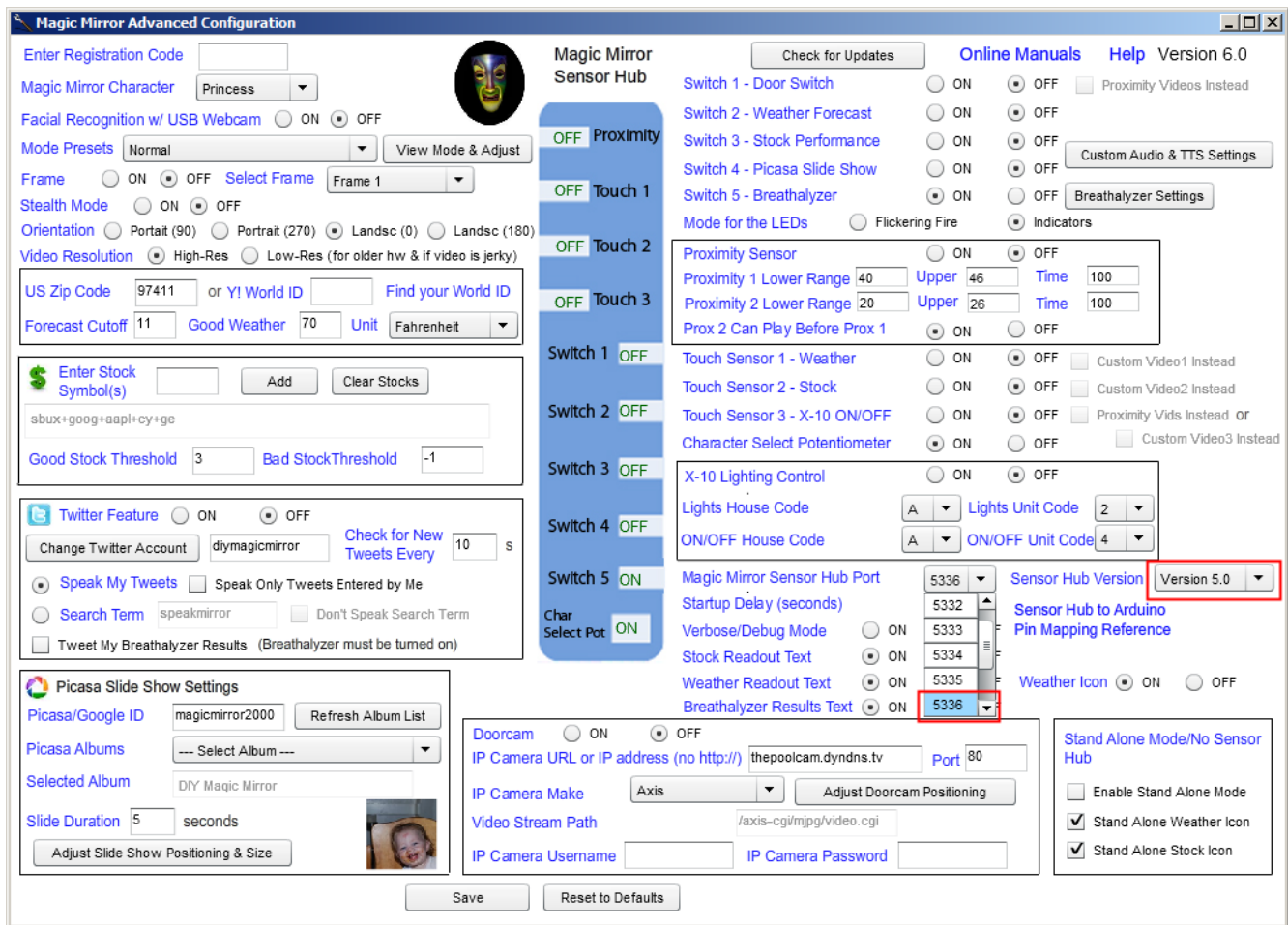
Raw Version of the Kit



Launch “Magic Mirror Advanced Setup”

Select the Magic Mirror Sensor Hub Port. If your Sensor Hub is on COM6, then choose 5336. If it is on COM7, then choose 5337 and so on.

**IMPORTANT:** If you’ve got the Breathalyzer version of the Kit with the case, then select “Version 5.0”. This would have been automatically selected if the Sensor Hub was detected using the “Magic Mirror Quick Setup” program. If you’ve got the raw version of the Kit, then leave at “Version 4.0”.



Click < **Save** > when done and exit the “Magic Mirror Advanced Setup” program.



Launch the “Magic Mirror Quick Setup” program again and continue to **Step 7**. You may still get “**Not Detected**” which is fine.