



DIY Magic Mirror

Software Installation v4

Mac

© DIY Magic Mirror

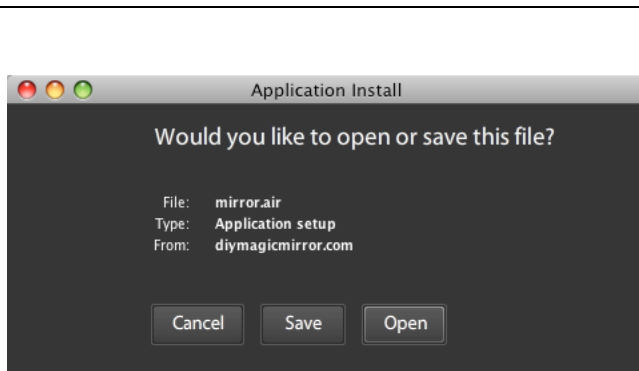
DIY Magic Mirror Software Installation Instructions for the Mac

1 Go to <http://diymagicmirror.com/install-mac.html>

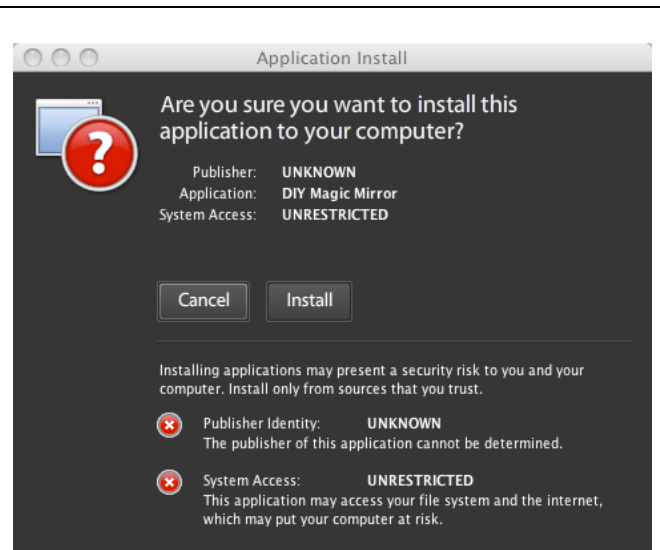
Click the < INSTALL STEP 1 > button and follow the installation instructions per below. **IMPORTANT:** Do not change the default installation directory.



If it's not already installed, you will be prompted to install the Adobe AIR framework and then the Magic Mirror installation will begin.

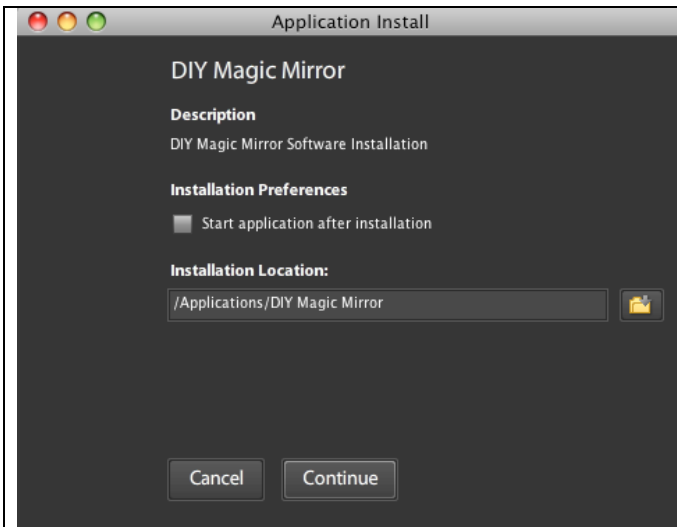


Click < Open >

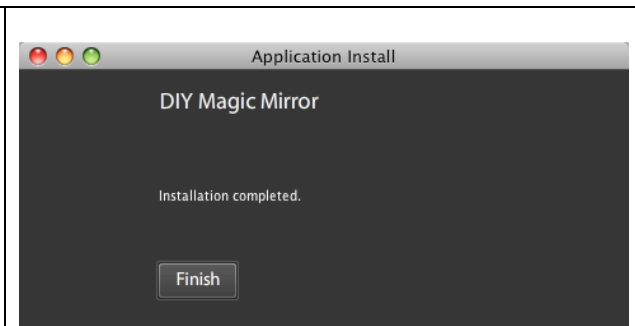


Click < Install >

Enter your administrator password when prompted



Uncheck < Start application after installation > and click
< Continue >.

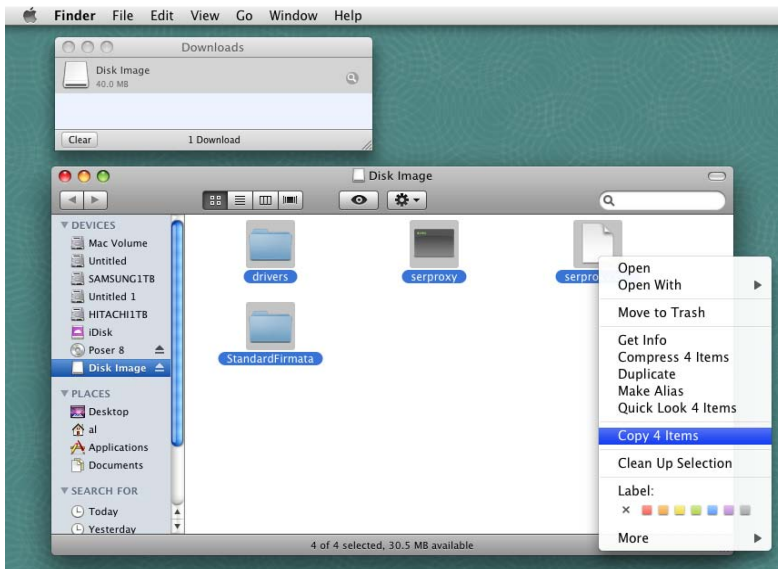


2 Click the < INSTALL STEP 2 > button and follow the same installation steps as the previous step and **ensure you don't change the default installation directory.**

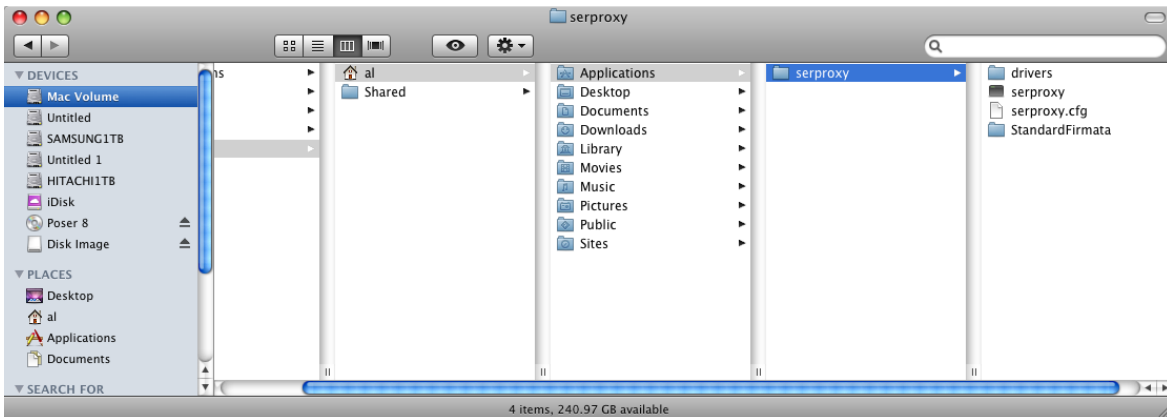


3 From <http://diymagicmirror.com/install-mac.html>, download the file **Mac-Install.dmg** and extract the contents to any folder that you have write access to, for example: **Users/your home directory/Applications/serproxy**

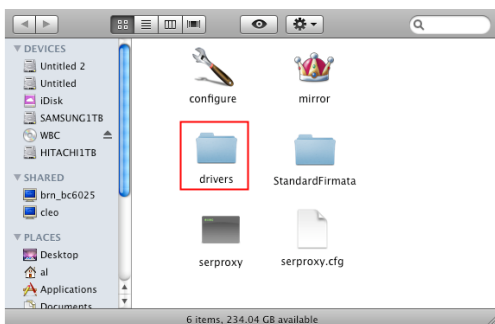
Copy the contents of the image file



Create and paste into any folder you have write access to which is **/Users/your home directory/Applications/serproxy** in this example.



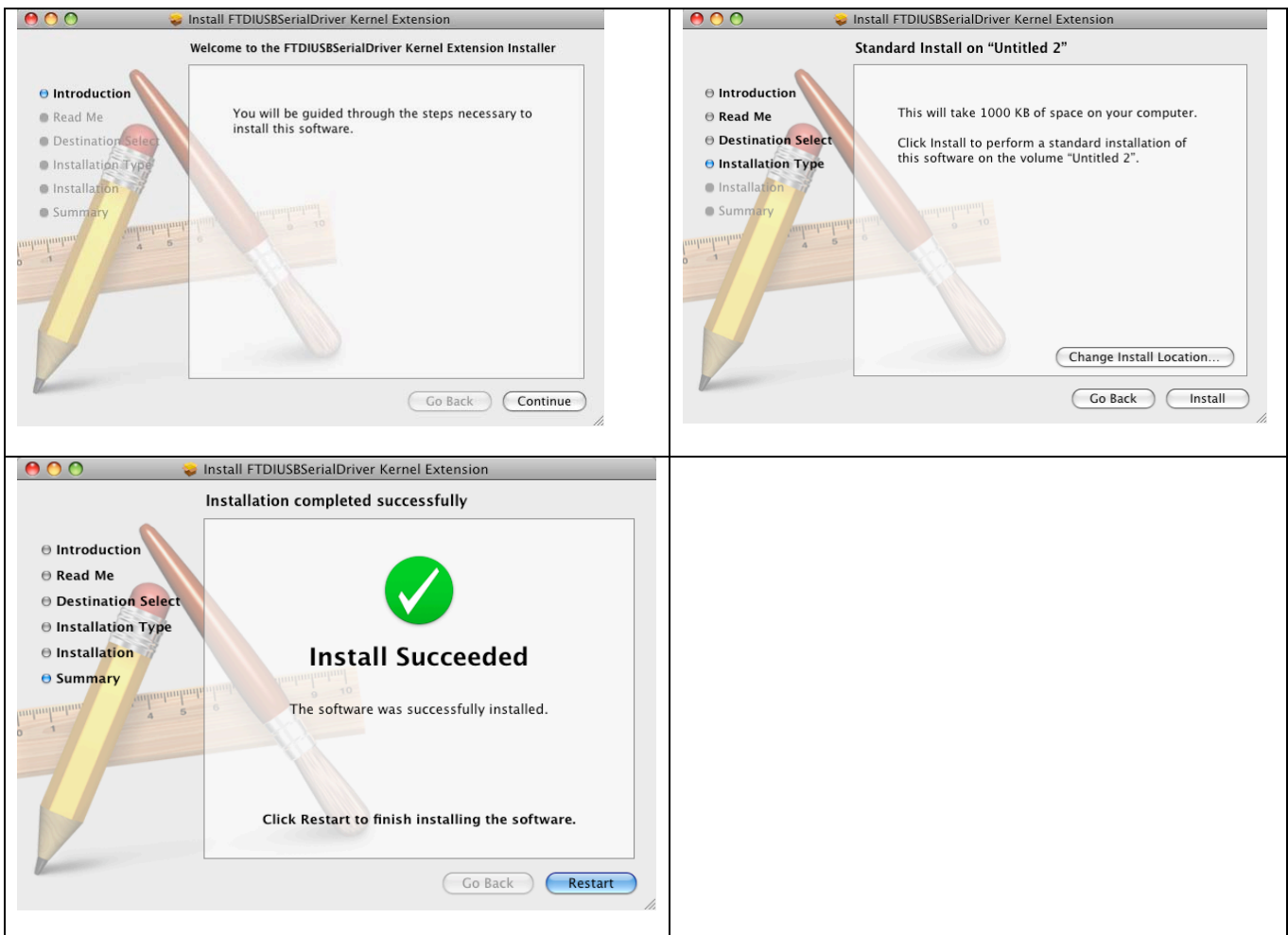
4 Plug the Magic Mirror Sensor Hub into a USB port on your Mac. From **Users/your home directory/Applications/serproxy**, open the **< drivers >** directory



Open the respective file if you have an Intel Mac or Non Intel Mac.

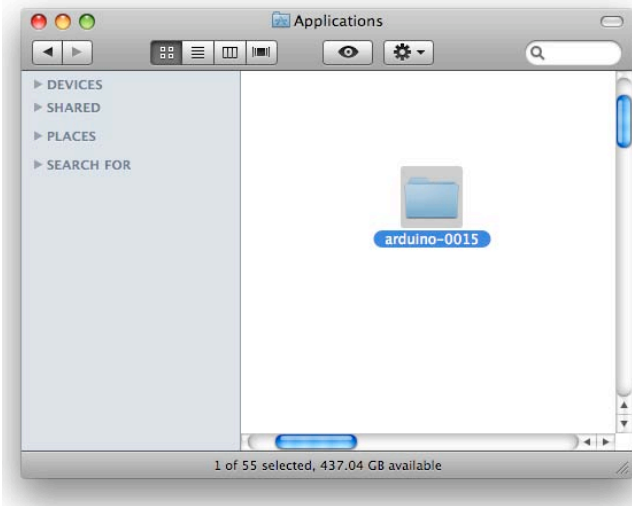


Accepting the default selections, install the driver and then reboot.

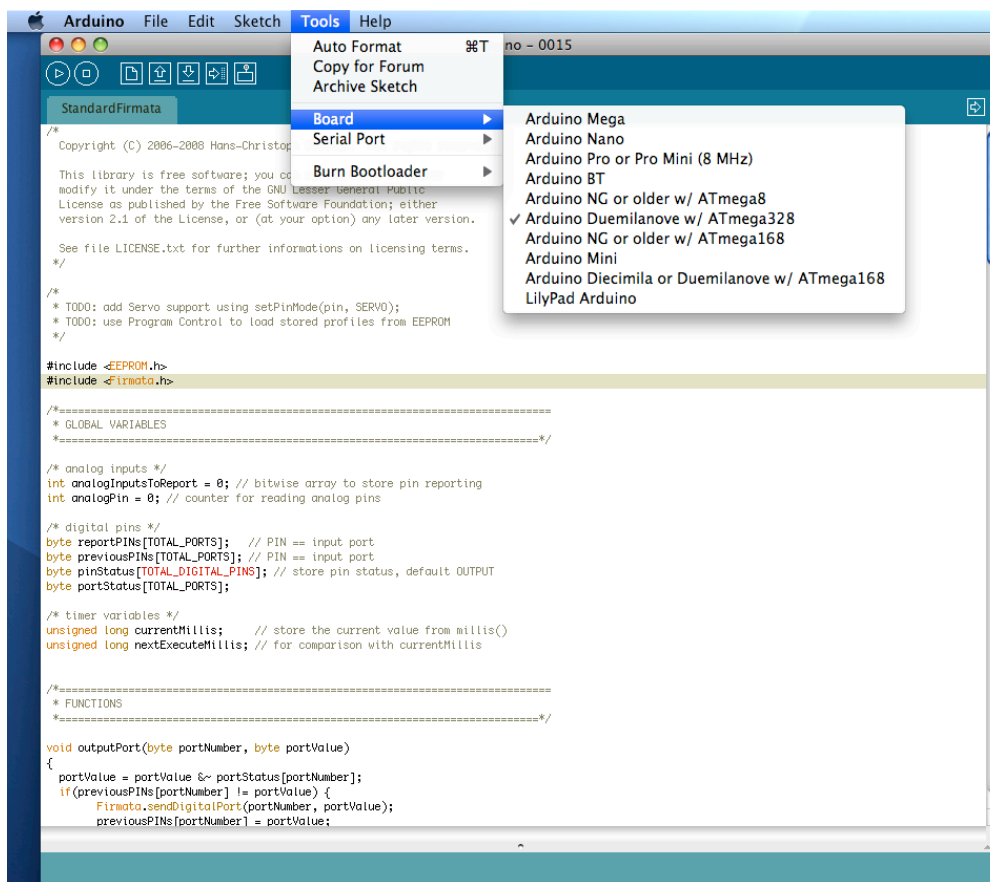


5 Skip this step and go directly to step 6 if you purchased an assembled kit as Firmata comes pre-installed with the assembled kits. Download the latest Mac Arduino software from <http://arduino.cc>

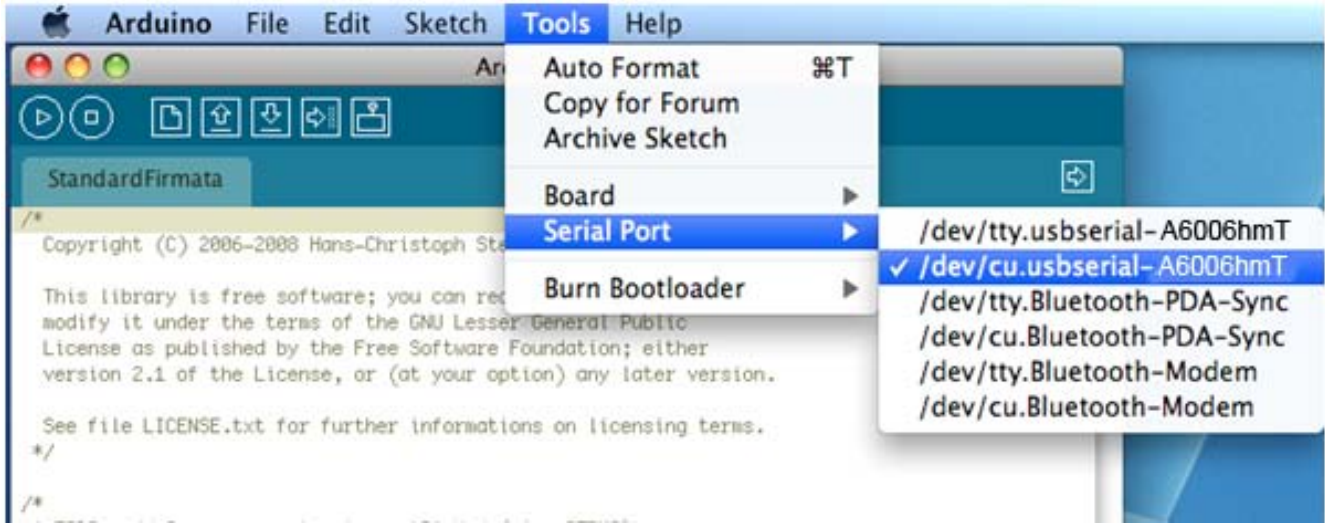
Once unzipped, place the Arduino folder in **Applications**.



Open the Arduino program. Select < Tools >, < Boards >, and then your Arduino board.

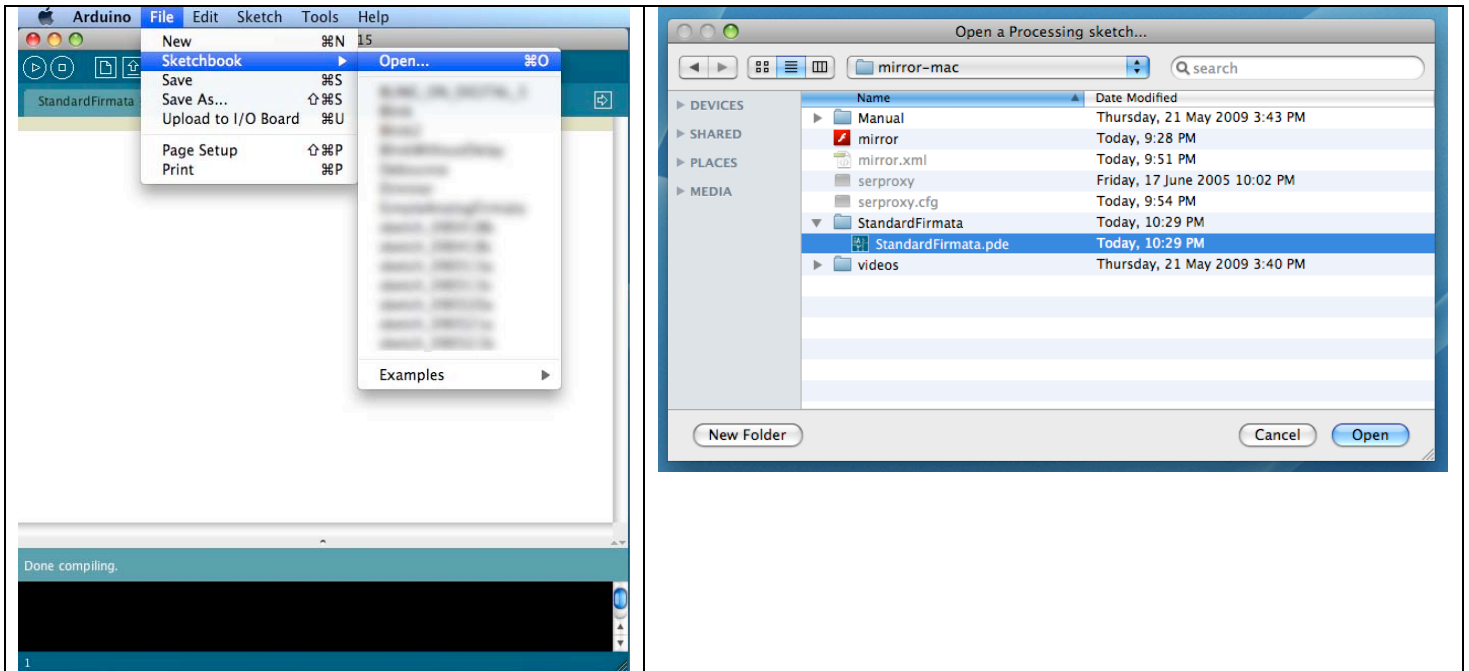


Select < Tools >, < Serial Port >, and then select the device /dev/cu.usbserial-X where X is unique to your system (/dev/cu.usbserial-A6006hmT in this example). Make a note of this address as you'll need it later.



Upload the Firmata firmware to your Arduino. Once uploaded Firmata will remain on your Arduino permanently so you will only need to do this once. **Be sure to use the Firmata file that came with the DIY Magic Mirror installation.**

Select < File >, < Sketchbook >, < Open > and select **DIY Magic Mirror/StandardFirmata/StandardFirmata.pde**

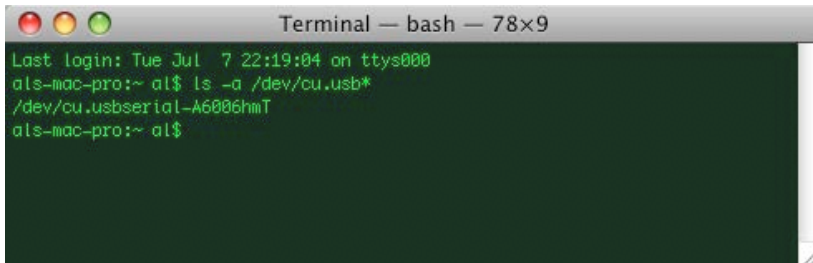


Verify and then Upload to the Arduino. "Done Uploading" will display at the bottom of the screen when finished and then close the Arduino program.

6 Find your Sensor Hub/Arduino address by opening a Terminal window and typing:

```
ls -a /dev/cu.usb*
```

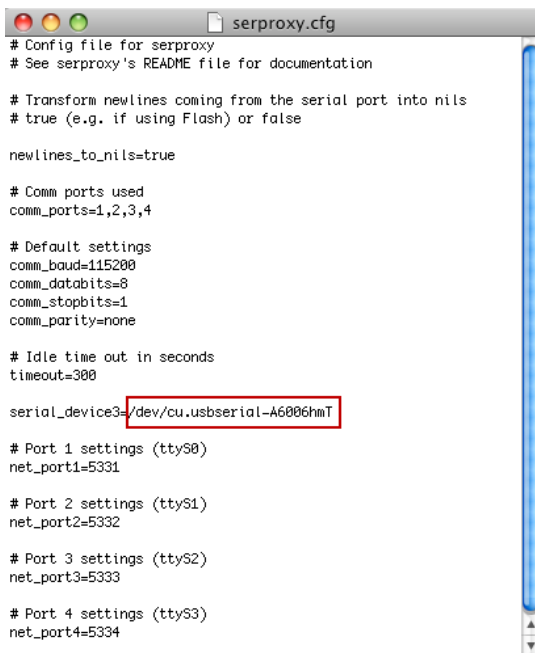
The address will then appear (be sure to have your Sensor Hub/Arduino plugged in). In this example, the Sensor Hub/Arduino address is: `/dev/cu.usbserial-A6006hmT`



From the **Users/your home directory/Applications/serproxy** folder, open the serproxy.cfg file with TextEdit.



Change this address to your Sensor Hub/Arduino address that was obtained from the beginning of step 6. Save and exit out of the file.



7 Launch **configure**



Ensure the following settings and then exit.

- < Verbose/Debug Mode > is **ON**
- < Arduino/Sensor Hub Port > is set to **5333**
- **IMPORTANT:** Only sensors that are wired up and connected are set to **ON** which will be < Character Select Potentiometer > with the Magic Mirror Sensor Hub. All other switches/sensors that are not yet hooked up must be left **OFF** until they are hooked up or you'll overload your computer with false sensor readings and potentially crash the software.

DIY Magic Mirror Configuration Version 4.0

Enter Registration Code

Sensor Hub Version

Arduino Version

Magic Mirror Mode

Idle Videos ON OFF

Weather Zip Good Weather Threshold

Forecast Cutoff Unit of Temperature

Orientation Portrait (90) Portrait (270) Landsc (0) Landsc (180)

Video Resolution High-Res Low-Res (for older hw & if video is jerky)

Adjust Screen Positioning & Size

Enter Stock Symbol(s) Add

Clear Stocks

Good Stock Threshold Bad Stock Threshold

Picasa Slide Show Settings

Picasa/Google ID Refresh Album List

Picasa Albums

Selected Album

Slide Duration seconds

Adjust Slide Show Positioning & Size

Magic Mirror Sensor Hub Check for Updates Online Manuals Help

Switch 1 - Door Switch ON OFF

Switch 2 - Weather Forecast ON OFF

Switch 3 - Stock Performance ON OFF

Switch 4 - Picasa Slide Show ON OFF

Switch 5 - Breathalyzer ON OFF Breathalyzer Settings

Mode for the LEDs Flickering Fire Indicators

Proximity Sensor ON OFF

Proximity 1 Lower Range Upper Time

Proximity 2 Lower Range Upper Time

Prox 2 Can Play Before Prox 1 ON OFF

Touch Sensor 1 - Weather ON OFF

Touch Sensor 2 - Stock ON OFF

Touch Sensor 3 - X-10 ON/OFF ON OFF

Character Select Potentiometer ON OFF

X-10 Lighting Control ON OFF

Lights House Code Lights Unit Code

ON/OFF House Code ON/OFF Unit Code

Magic Mirror Sensor Hub Port

Startup Delay (seconds)

Verbose/Debug Mode ON OFF

Stock Readout Text ON OFF

Weather Readout Text ON OFF

Weather Icon ON OFF

Doorcam ON OFF

IP Camera URL or IP address (no http://) Port

IP Camera Make Adjust Doorcam Positioning

Video Stream Path

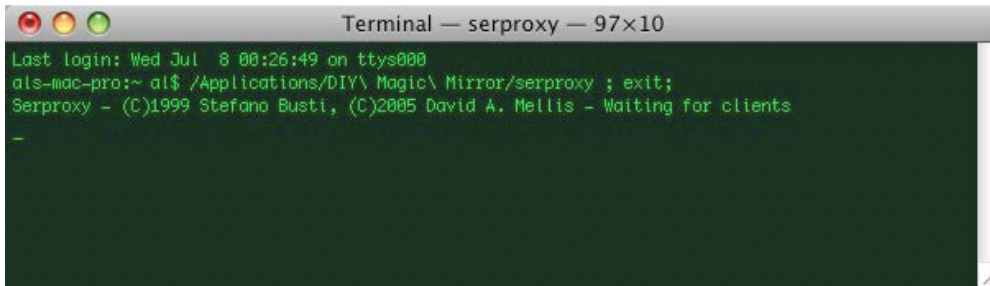
IP Camera Username IP Camera Password

Char Select Pot ON OFF

Sensor Hub to Arduino Pin Mapping Reference

Save Reset to Defaults

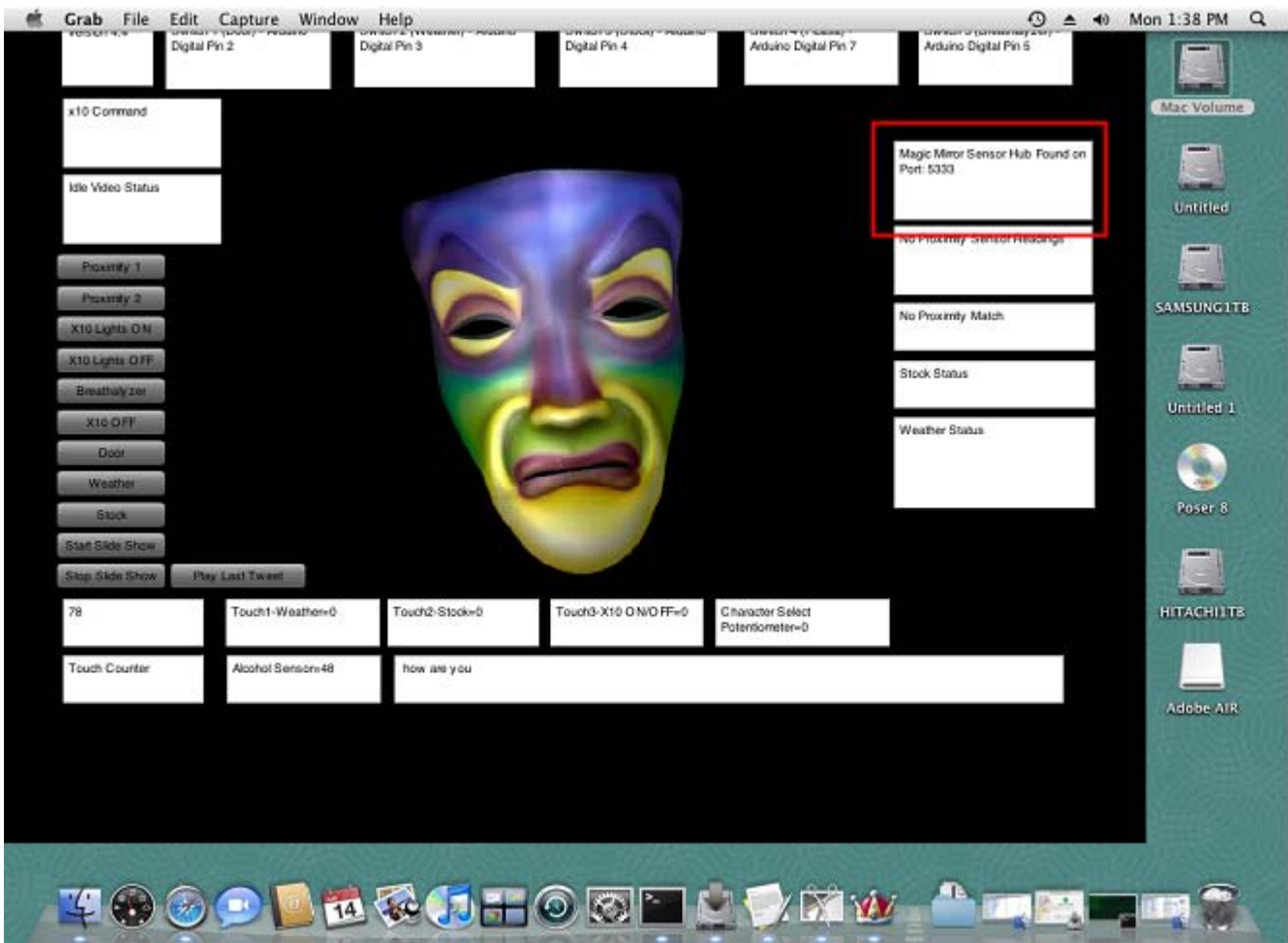
8 Launch **serproxy** **IMPORTANT: You must always run serproxy before launching the Magic Mirror.**



9 Launch mirror

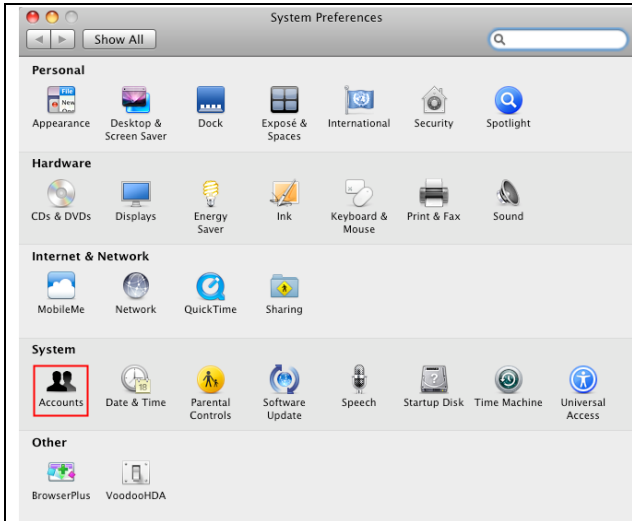


If you see < Sensor Hub Found on Port: 5333 > and one of the characters playing, your Magic Mirror software is up and running & installed correctly. Refer to the DIY Magic Mirror Wiring and Operations Manual for instructions on how to wire up the sensors and configure the Magic Mirror.

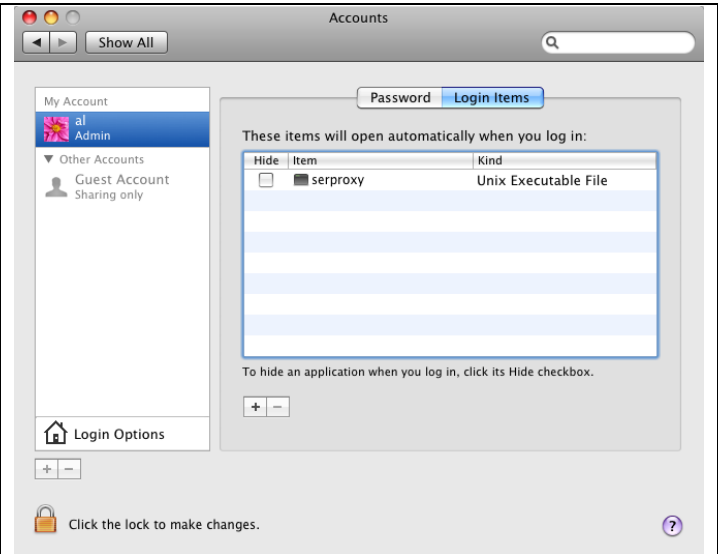


10 Now let's add serproxy to start up automatically on your Mac so you don't need to manually open it before launching the Magic Mirror.

From the dock, open "System Preferences"



Open "Accounts"



Add serproxy to open automatically when you log in

11 Adobe AIR will periodically prompt for automatic updates. To disable Adobe AIR automatic updates, run this application <http://airdownload.adobe.com/air/applications/SettingsManager/SettingsManager.air> and then select “Disable Updates”.

If you do not do this, you’ll get an annoying Adobe AIR upgrade prompt every so often which will be a problem if you are running in a kiosk mode (no keyboard/mouse).

